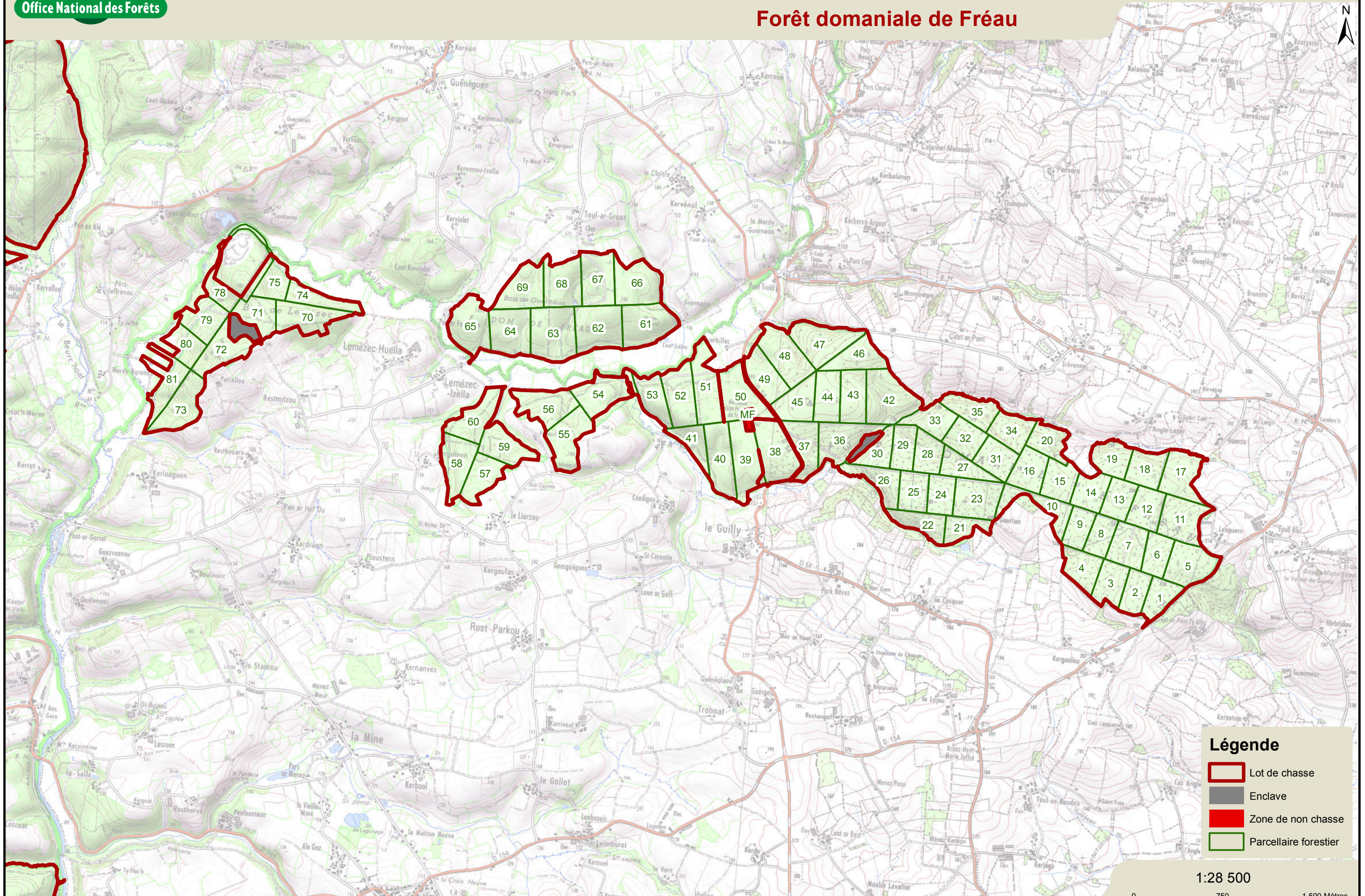


Forêt domaniale de Fréau



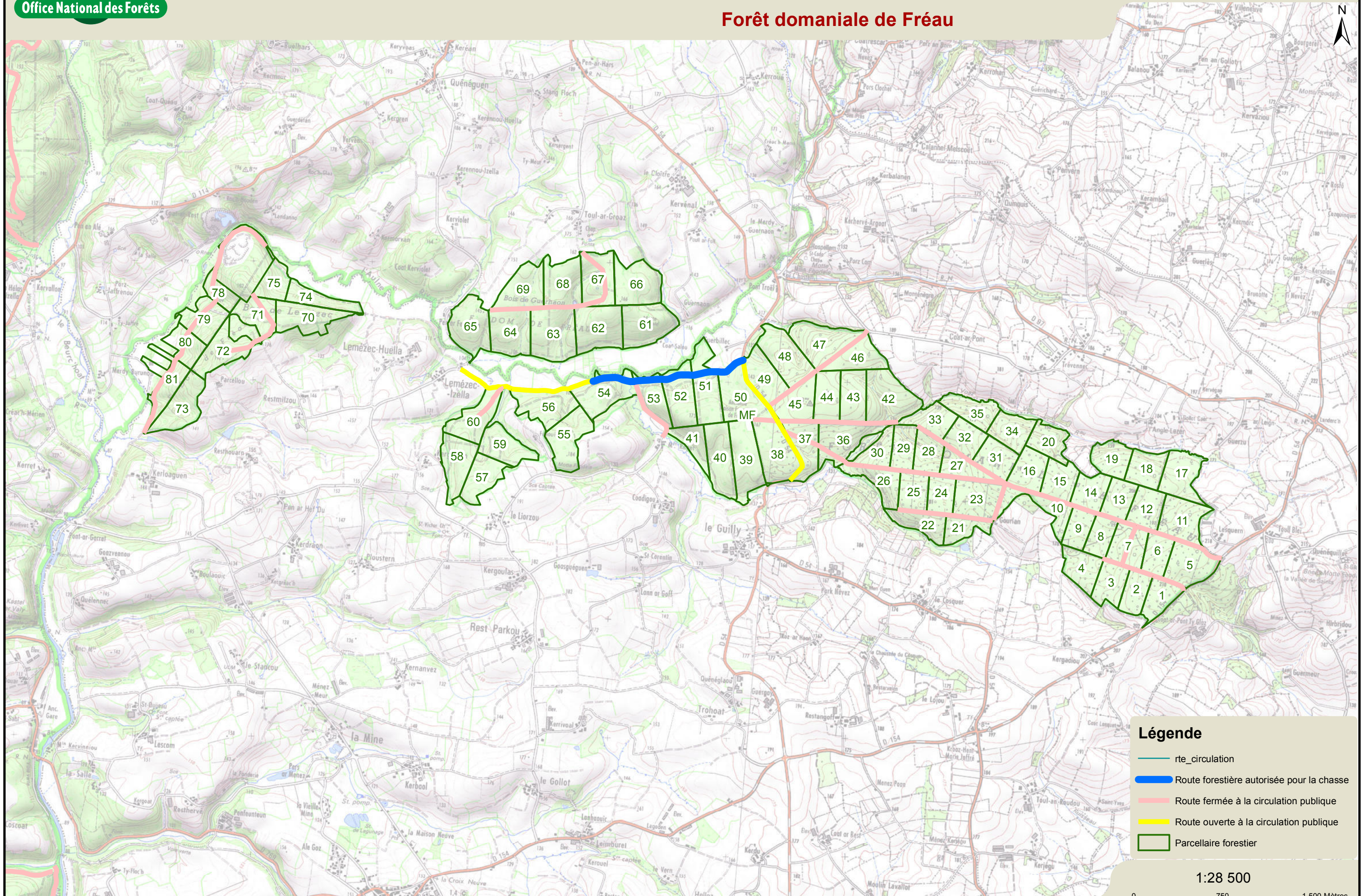
Légende

- Lot de chasse
- Enclave
- Zone de non chasse
- Parcellaire forestier

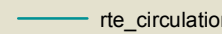
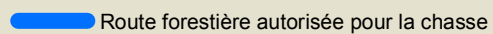
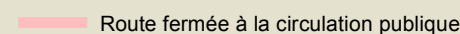

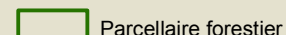
1:28 500

0 750 1 500 Mètres

Forêt domaniale de Fréau

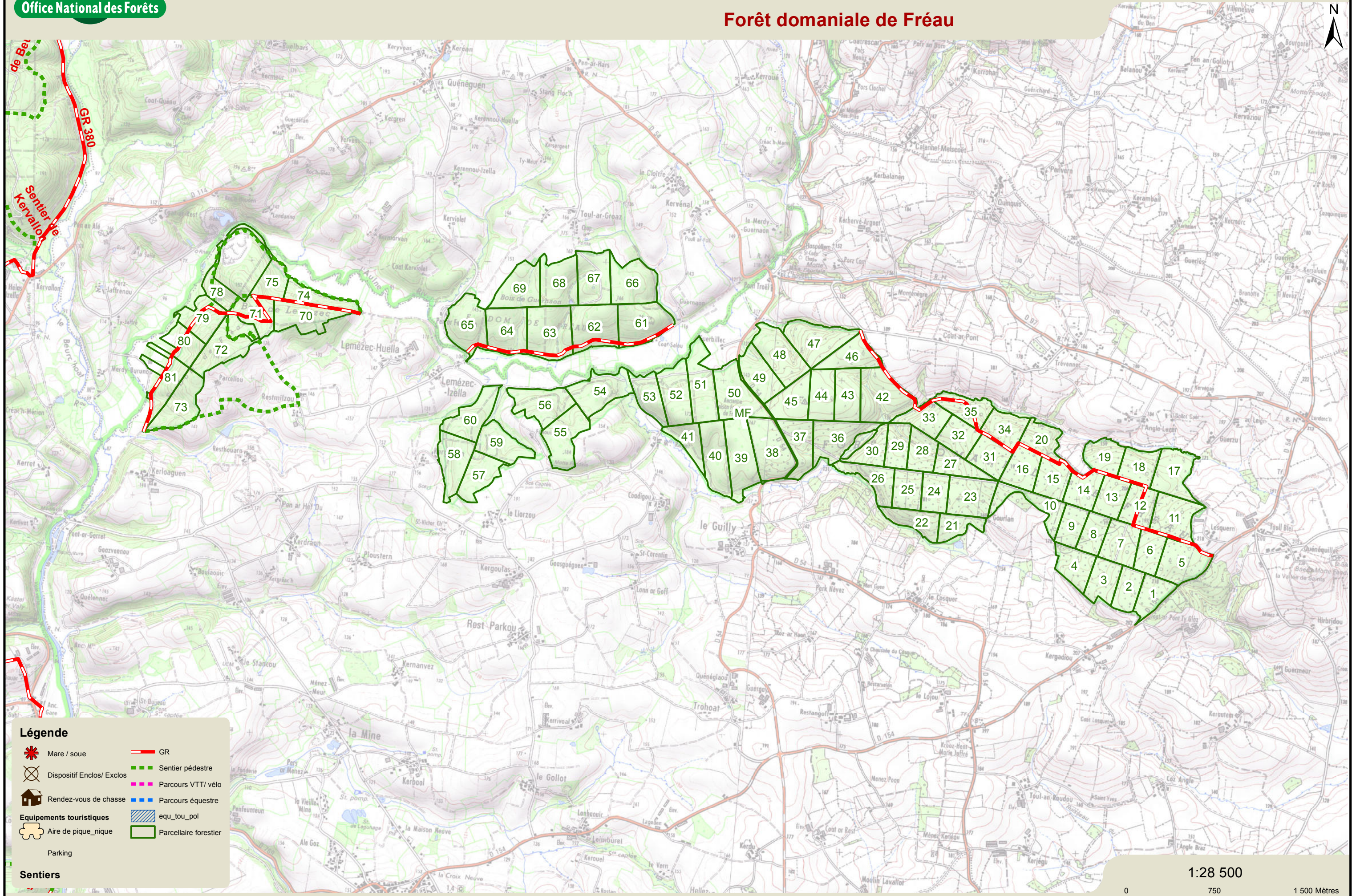


Légende










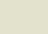
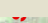
-  rte_circulation
-  Route forestière autorisée pour la chasse
-  Route fermée à la circulation publique
-  Route ouverte à la circulation publique
-  Parcellaire forestier

1:28 500





Légende

 Mare / soue	 GR
 Dispositif Enclos/ Exclos	 Sentier pédestre
 Rendez-vous de chasse	 Parcours VTT/ vélo
Équipements touristiques	 Parcours équestre
 Aire de pique_nique	 equ_tou_pol
 Parcellaire forestier	
 Parking	

Sentiers

1:28 500





Agence territoriale Bretagne

saison 2024/2025

TABLEAU DE CHASSE EN FORET DOMANIALE - BECASSE

Département du Finistère

Forêt de : Fréau

Lot 2

Jour de chasse	bécasses vues	bécasses tirées	bécasses tuées	poids moy (gr)	Parcelle	adultes	jeunes

Fait à

Le

(signature du titulaire de la licence)